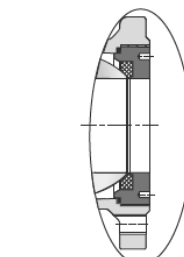
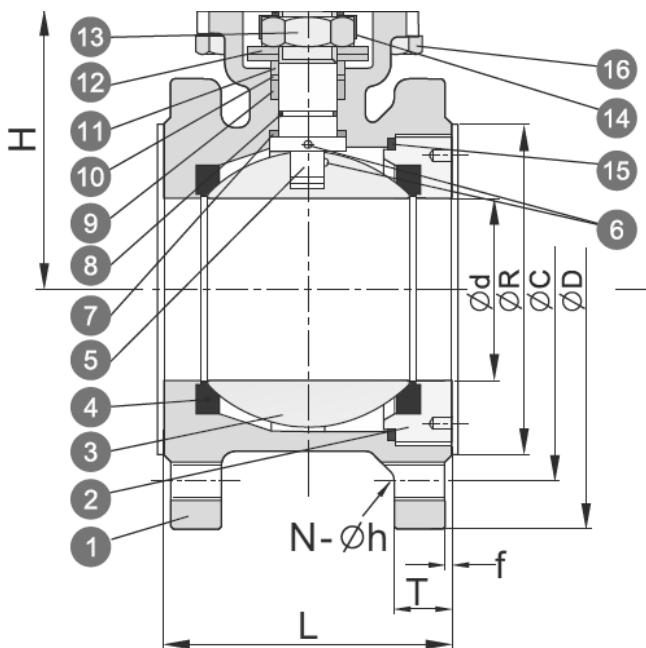
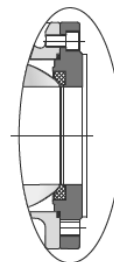


## Kompakt-Flanschkugelhahn, Edelstahl / Wafer type flanged ball valve, stainless steel PA-55D.266/466.P

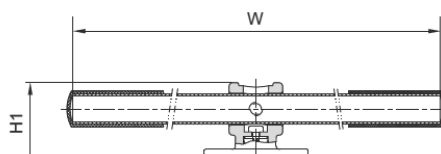
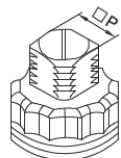
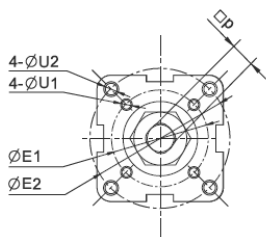
Technische Daten	Specification
<b>Bauform</b> 2-teilig ISO-Direktaufbauflansch	<b>Design</b> 2-piece ISO-Directmountingpad
<b>Anschluss</b> Beidseitig Flansch DN 15 - DN 150	<b>Connection</b> Flanged Ends DN 15 - DN 150
<b>Betriebsdruck</b> PN 16/40	<b>Pressure Range</b> PN 16/40
<b>Betriebstemperatur</b> max. 180°C	<b>Temperature Range</b> max. 180°C



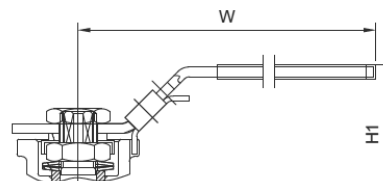
SIZE : DN 15 ~ DN 80



SIZE : DN 100 ~ DN 150



SIZE : DN 100 ~ DN 150



SIZE : DN 15 ~ DN 80

No.	Part name	Material
1	Body	1.4408
2	Cap	1.4408
3	Ball	1.4408
4	Ball Seat	TFM-1600
5	Stem	316
6	Anti-Static Device	316
7	Thrust washer	PTFE
8	O-Ring	FKM
9	Stem Packing	PTFE
10	Bushing	50%SS + 50%PTFE
11	Gland	316
12	Belleville Washer	301
13	Stem Nut	A194-8
14	Stop-lock-Cap	304
15	Body Gasket	PTFE
16	Hex Bolting	A193-B8

Unit: mm

SIZE	PN	d	R	C	D	f	T	L	H1	W	H	M	P	N	h	U1	U2	E1	E2	ISO 5211	
DN15	1/2"	10~40	15.0	45	65	95	2	9	42	77	145	46.0	9	9	4	M12	6	6	36	42	F03-F04
DN20	3/4"	10~40	20.0	58	75	105	2	9	44	85	145	51.0	9	9	4	M12	6	7	36	50	F04-F05
DN25	1"	10~40	25.0	68	85	115	2	9	50	94	175	62.0	11	11	4	M12	6	7	42	50	F04-F05
DN32	1-1/4"	10~40	32.0	78	100	140	2	12	60	104	175	72.0	11	11	4	M16	6	9	42	70	F05-F07
DN40	1-1/2"	10~40	38.0	88	110	150	3	13	65	114	196	78.0	14	14	4	M16	7	9	50	70	F05-F07
DN50	2"	10~40	50.0	102	125	165	3	20	80	120	196	86.0	14	14	4	M16	7	9	50	70	F05-F07
DN65	2-1/2"	10/16 25/40	63.5	122	145	185	3	18 22	110 113	158	265	108.0	17	17	4 8	M16	9	11	70	102	F07-F10
DN80	3"	10/16 25/40	76.0	138	160	200	3	20 24	120	165	265	116.0	17	17	8	M16	9	11	70	102	F07-F10
DN100	4"	10/16 25/40	95.0	158 162	180 190	220 235	3	20 24	150 154	182	400	139.0	22	22	8	M16 M20	N/A	11	N/A	102	F10
DN125	5"	10/16 25/40	118.0	188	210 220	250 270	3	22 26	180	224	800	176.0	27	27	8	M16 M24	N/A	14	N/A	125	F12
DN150	6"	10/16 25/40	142.0	212 218	240 250	285 300	3	22 28	225	268	800	192.0	27	27	8	M20 M24	N/A	14	N/A	125	F12